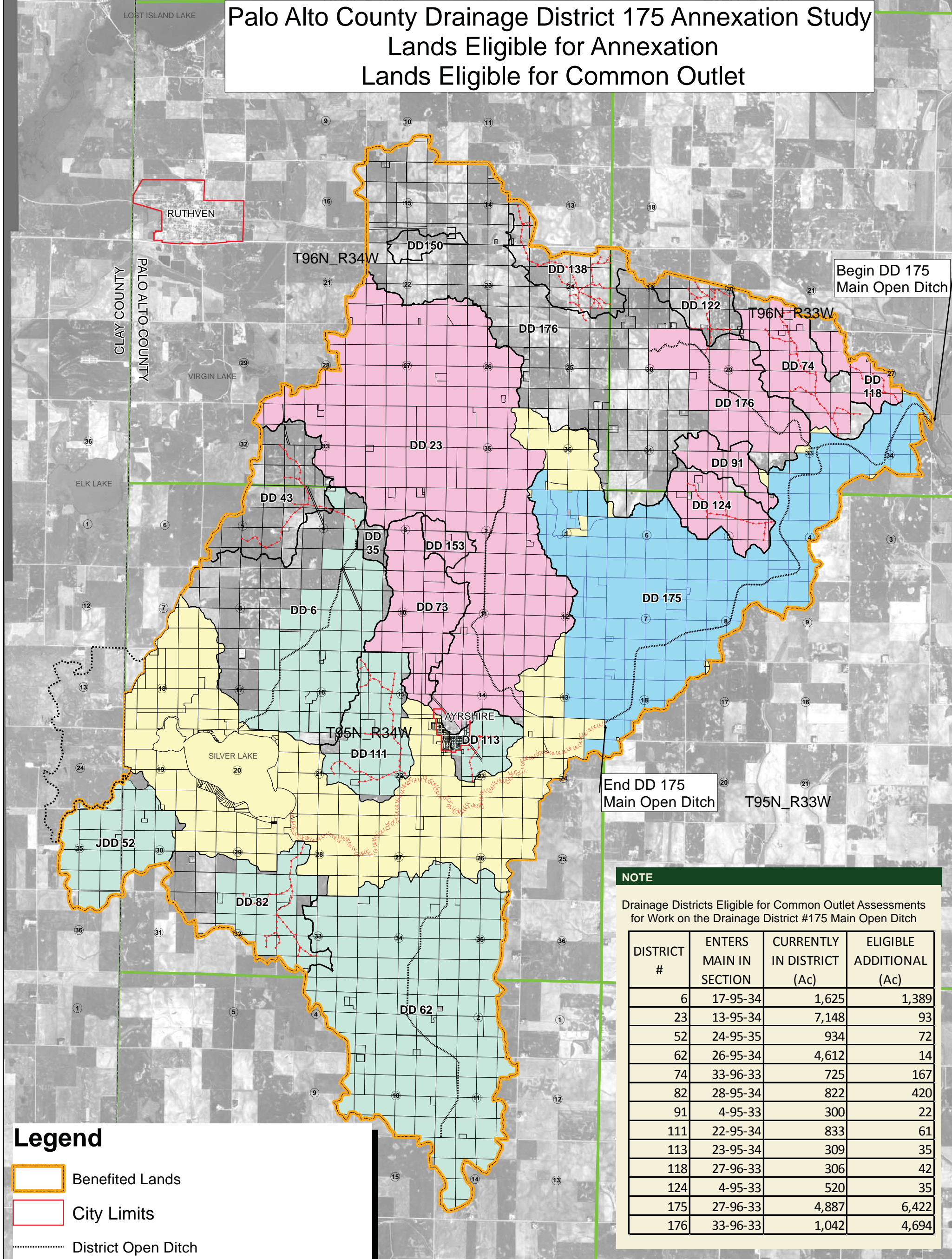


Palo Alto County Drainage District 175 Annexation Study

Lands Eligible for Annexation

Lands Eligible for Common Outlet



Begin DD 175
Main Open Ditch

End DD 175
Main Open Ditch

NOTE

Drainage Districts Eligible for Common Outlet Assessments for Work on the Drainage District #175 Main Open Ditch

DISTRICT #	ENTERS MAIN IN SECTION	CURRENTLY IN DISTRICT (Ac)	ELIGIBLE ADDITIONAL (Ac)
6	17-95-34	1,625	1,389
23	13-95-34	7,148	93
52	24-95-35	934	72
62	26-95-34	4,612	14
74	33-96-33	725	167
82	28-95-34	822	420
91	4-95-33	300	22
111	22-95-34	833	61
113	23-95-34	309	35
118	27-96-33	306	42
124	4-95-33	520	35
175	27-96-33	4,887	6,422
176	33-96-33	1,042	4,694

Legend

- Benefited Lands
- City Limits
- District Open Ditch
- Unimproved Stream
- County Line
- Proposed Annexation Area
- Current DD 175 Assessment
- Current Eligible Common Outlet DDs
- Common Outlet DDs After Annexation

Information

CURRENTLY ASSESSED AREA IN DD #175: 4,887 Acres

ASSESSED AREA IN DD #175 FOLLOWING ANNEXATION: 11,309 Acres

TOTAL AREA CURRENTLY ASSESSIBLE WITH COMMON OUTLET : 16,145 Acres

TOTAL AREA ASSESSIBLE WITH COMMON OUTLET AFTER DD #175 ANNEXATION: 27,762 Acres

TOTAL AREA ASSESSIBLE IF COMMON OUTLET DDS ANNEX ALL BENEFITED LANDS: 39,686 Acres

TOTAL AREA ASSESSIBLE IF DD 175 ANNEX ALL BENEFITED LANDS: 39,686 Acres