

**WEIGHT EMBARGO - SPECIFIC ROADS
RESOLUTION 3-2-2021(A)**

WHEREAS: The Palo Alto County Board of Supervisors recognizes the severity of the past winter and its effect on certain paved roads during the period of thawing this spring, and

WHEREAS: Sections 321.236(8), 321.255, 321.471, and 321.473 of the Code of Iowa provide the authority for local authorities to impose restrictions as to the weight of vehicles to be operated on any highway under their jurisdiction and Section 321.463 establishes the penalty for violating said restrictions.

NOW, THEREFORE, BE IT RESOLVED by the Board of Supervisors of Palo Alto County, Iowa that the roads listed below shall be eligible to have the following weight restrictions implemented by the erection of such signs as are necessary to advise the traveling public of these limits, in accordance with Section 321.472:

6-Ton Axle Limit (Gross Load = Number of Axles X 6 Tons)

NOW, THEREFORE, BE IT FURTHER RESOLVED that the County Engineer may grant permits of exemption upon showing evidence of severe economic hardship or in emergency situations.

It is intended that these weight restrictions shall remain in effect for a period of three weeks or less, but may not exceed 90 days. The weight restrictions shall be enacted when the weight embargo signs are placed and rescinded by the removal of signs by the proper authority.

Complete Listing of Roads to be embargoed:

No.	Road name/number	From	To
1	Highway B14	480 Ave	500 Ave
2	Highway B19	530 Ave (Hwy N60)	580 Ave (Kossuth Co. Line)
3	Highway B20	530 Ave (Hwy N60)	580 Ave (Kossuth Co. Line)
4	Highway B53	340 Ave (Hwy N18)	380 Ave (Hwy N28)
5	Highway N60	390 St (US Hwy 18)	Rodman Corp. Limits
6	Highway B63	380 Ave (Hwy N28)	460 Ave (IA Hwy 4)
7	Highway B63	525 Ave	West Bend Corp. Limits
8	Highway N28	360 St (US Hwy 18)	420 St (Hwy B53)
9	Highway N40	280 St (Hwy B14)	360 St (Emmetsburg Corp. Limits)
10	North Huron Road	340 St	360 St (Emmetsburg Corp. Limits)

Passed and Approved this 9th day of March, 2021

Palo Alto County, Iowa

BOARD OF SUPERVISORS

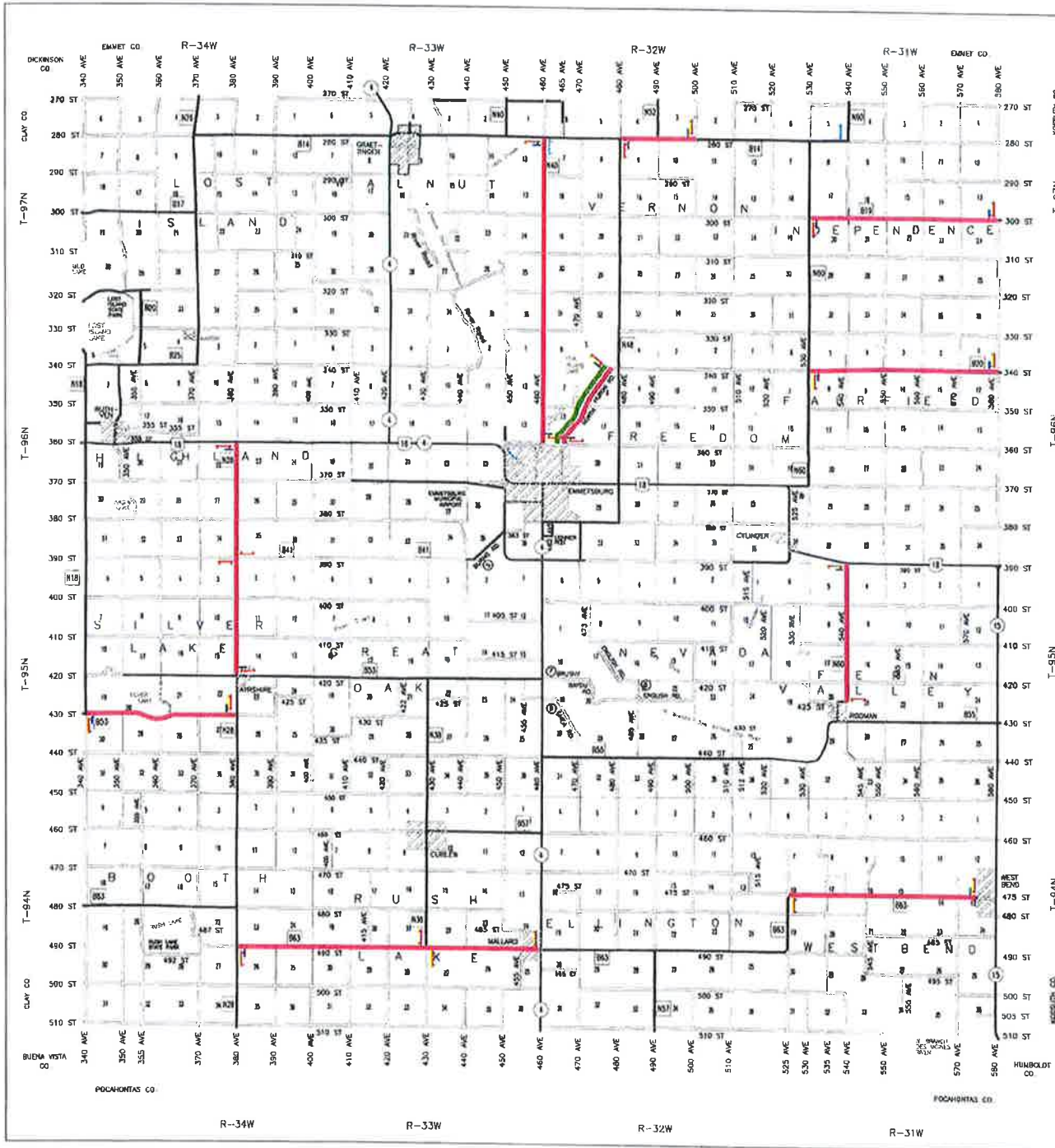
Chairman: [Signature]
 Member : [Signature]
 Member : [Signature]

Member : [Signature]
 Member : [Signature]

I, Carmen Moser, Auditor in and for Palo Alto County, Iowa, do certify the above to be a true and exact copy of a resolution passed and approved by the Board of Supervisors of Palo Alto County, Iowa at its meeting on the 9th day of March 2021.

ATTEST: [Signature], Palo Alto County Auditor

Motion By: Craig Merrill Second By: Ron Graetinger



PALO ALTO COUNTY



2021

- SPRING EMBARGO ROUTES
6 TONS PER AXLE
- FALL EMBARGO ROUTES
6 TONS PER AXLE

SIGN LEGEND

- ROAD EMBARGO
- ROAD EMBARGO AHEAD
- END ROAD EMBARGO



PALO ALTO COUNTY ENGINEER

2105 Main St, Suite 103, PO BOX 389
EMMETSBURG, IOWA 50536
PHONE (712) 852-3001 – FAX (712) 852-3601
E-mail: paloaltoengineer@yahoo.com

WALTER DAVIS-OETH, P.E.
COUNTY ENGINEER

CHRIS TOWELL, P.L.S.
ASSISTANT TO THE ENGINEER

MELISSA HALL
OFFICE MANAGER

JUSTIN WILLIAMS
DAN BERVEN
ENGINEERING TECHNICIANS

ROBIN MOORE
OFFICE ADMIN ASST

March 02, 2021

Re: Temporary Load Restrictions on Vulnerable Paved Roads

To Whom it May Concern,

In the spring of 2008, Palo Alto County implemented temporary 6 ton axle limits for the first time to protect several of our most vulnerable pavements during the spring thaw. That temporary embargo was a huge success, reducing the patching costs incurred on B53 from \$200,000 in 2007, with no restrictions, to \$20,000 in 2008 after using short term reduced axle limits in the spring. Unfortunately, in the spring of 2009, B-14 west of Graettinger experienced \$300,000 worth of damage in just a few days of heavy hauling by the Graettinger elevator before the road was embargoed by the County. B-14 was not originally embargoed by the county as it historically did not see that level of loading during that time of year. This costly experience prompted the county to increase the number of roads covered by the temporary spring embargo to our current number. See *attached map*.

The Board of Supervisors will again enact a temporary load limit of 6 tons per axle on some of Palo Alto County's highways that are most vulnerable to damage during the spring thaw. These are typically older pavements that are only 6 inches thick and are built on native subgrades that are less capable of supporting legal loads during thawing conditions.

Our goal with the spring load restrictions is to strike a balance between the commerce that is essential to the County and the high cost of taxpayer funded repair or replacement of our pavements.

Load restrictions of 6 tons per axle will be placed on designated pavements as shown on the enclosed embargo map. Our desire is to minimize the amount of time the restrictions are in place. This will depend on the speed of the thaw and how quickly the road base recovers some of its strength. The restrictions typically go into effect between March 2 and April 17. The weight restrictions shall be enacted when the weight embargo signs are placed and will remain in effect until the signs are removed by the proper authority.

Thank you for your support and for adjusting your operations to comply with these temporary protective measures.

Sincerely,

Walter Davis-Oeth, P.E.
County Engineer